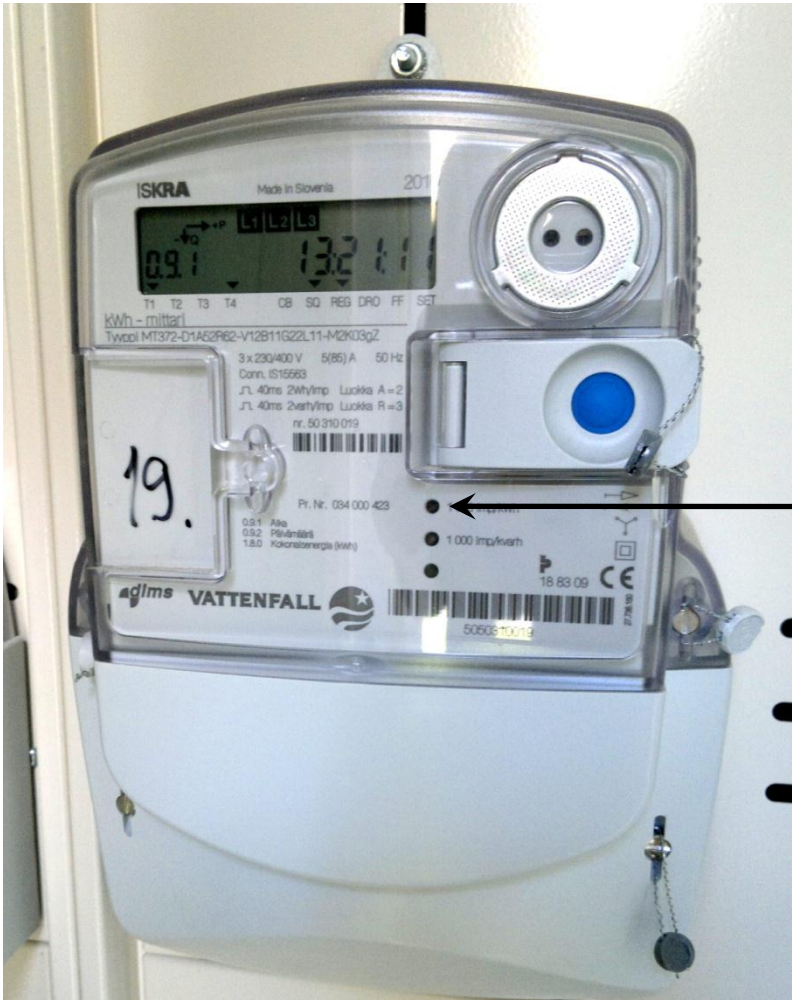


Iskraemeco – ME371 & MT372



OptiSmart meter location

Applying the OptiSmart Optical Reader to the above meter

- Remove the adhesive back and place the supplied metal washer over the LED lens as shown in the above picture.
- When the washer is secure place the OptiSmart optical head onto the washer.
- The LED on the OptiSmart optical head will flash in time with the impulse output of your electricity meter to confirm it is reading correctly.
- Next connect the cable running from the OptiSmart optical head into the side of the supplied white Transmitter unit.